

## How to use Measure software

### 1. Required System

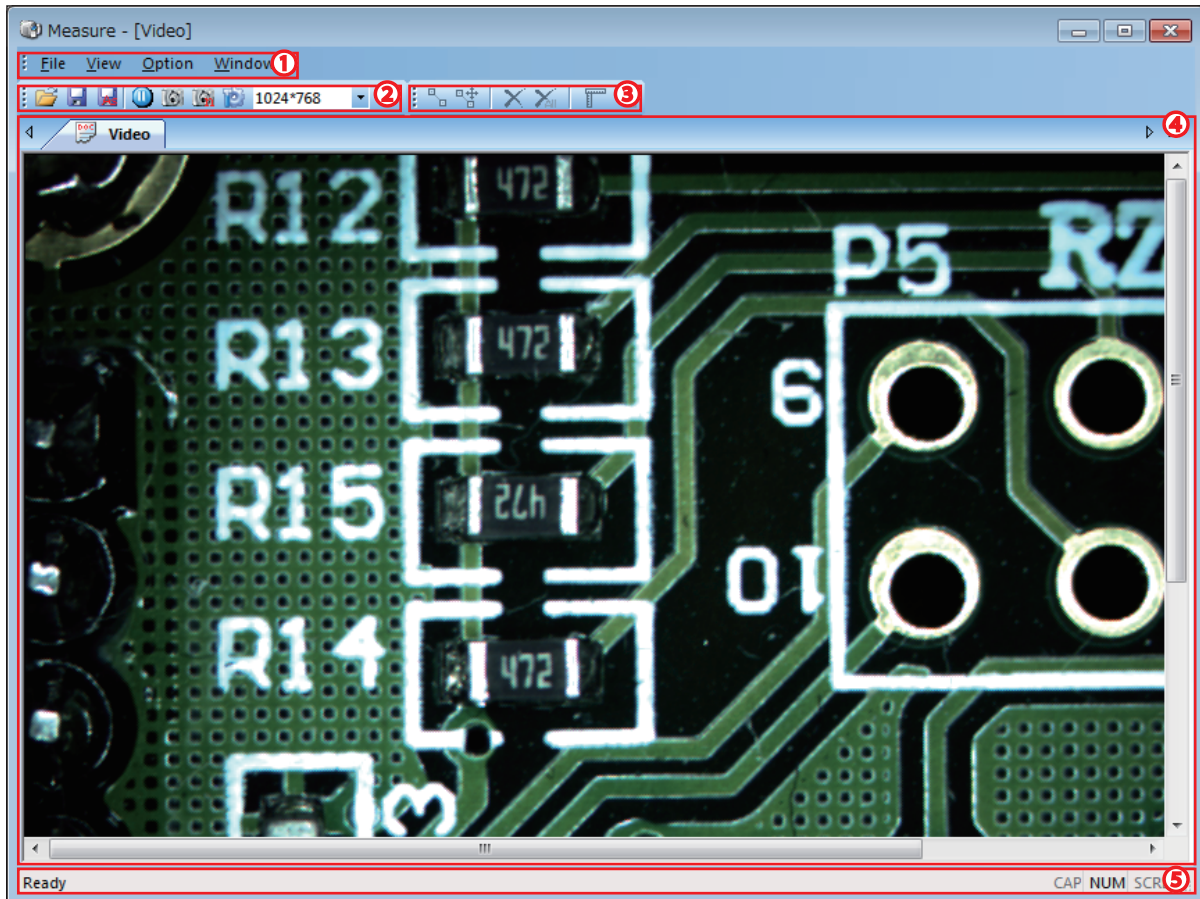
OS : Windows XP or later (Windows XP, Vista, 7, 8,10) 32 bit and 64 bit correspondence

CPU : Pentium 4 or higher

Memory : 1 GB or more (2 GB or more is recommended)

Interface : USB2.0, USB3.0

### 2. About Screen description



#### ① Menu bar (See page 2)

It is a menu that performs basic operation of software.

#### ② Tool Bar (See P.4 )

It is a menu that performs operations such as saving images, switching resolutions, setting camera properties, etc.

#### ③ Measure Bar (See P.5) ※The measurer bar is active only when the image is stopped.

It is a menu that carries out the calibration operation for distance measurement and measurement between two points.

#### ④ Preview Window

It is a window that displays live images and still images.

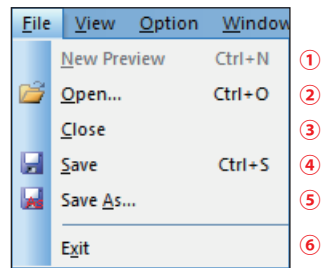
Multiple still images can be displayed, and the upper tab can manage multiple windows.

#### ⑤ Status Bar

A status bar that displays the current status.

### 3. Details of Menu Bar

#### ■ File Menu



#### ① 【New Preview】

When no image is displayed, the live image is displayed.

#### ② 【Open...】

Load a still image from an arbitrary file.

The read still image can be measured. You can also read multiple still images.

#### ③ 【Close】

Close the currently selected screen (active window).

#### ④ 【Save】

Save the image with one click.

When using this function, it is necessary to perform initial setting for saving images.

**For the initial setting, refer to the item of "Save Option" in the Option menu.** (See P.3)

#### ⑤ 【Save As...】

Add a file name and save the image. (\* 1)

#### ⑥ 【Exit】

Close the Software.

#### ( \* 1 ) About 【Save As...】

Set the file name and save place in the menu and save. (Please refer the figure on the right)

#### ① 【File Name】

Enter an arbitrary file name of the image to be saved.

#### ② 【File Path】

Select the location where you want to save the image.

#### ③ 【Image Type】

Select the image save format from BMP or JPG.

#### ④ 【Save with】

Check the items you want to save with the image.

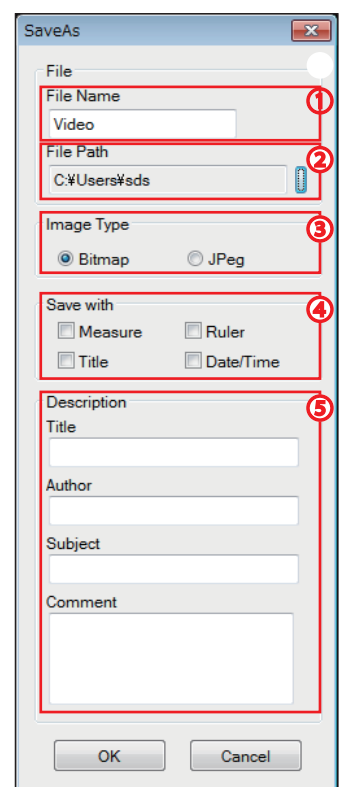
Measure ... Distance measured value    Ruler ... Calibration value

Title                      Date/Time

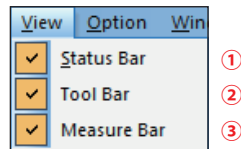
#### ⑤ 【Description】

You can save the creation environment information with the jpg image.

Title                      Author  
Subject                  Comment



## ■ View Menu



### ① 【Status Bar】

You can switch display / non-display of the status bar with or without check.

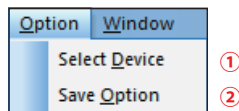
### ② 【Tool Bar】

You can switch display / non-display of the tool bar with or without check.

### ③ 【Measure Bar】

You can switch display / non-display of the Measure bar with or without check.

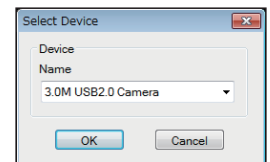
## ■ Option Menu



### ① 【Select Device】 It is started each time when the application starts up

A window for selecting the driver of the camera is displayed.

If you click on ▼ on the right side of the box of [Name], the drivers of the installed cameras will be listed, so select the driver of the camera and click OK.



### ② 【Save Option】

It is a function to perform initial setting for saving images with one click.

#### ① 【Prefix】

Enter an arbitrary file name of the image to be saved.

#### ② 【Start Suffix】

Enter the first number to be added to the file name.

#### ③ 【Folder】

Select the location where you want to save the image.

#### ④ 【Image Type】

Select the image save format from bmp and jpg.

#### ⑤ 【Save with】

Check the items you want to save with the image.

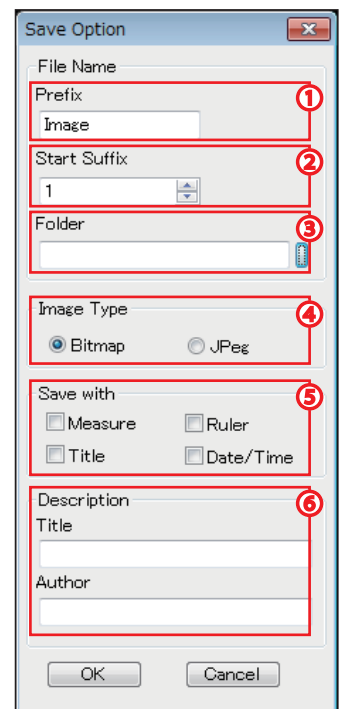
Measure ... Distance measured value    Ruler ... Calibration value

Title    Date/Time

#### ⑥ 【Description】

You can save the creation environment information with the jpg image.

Title    Author



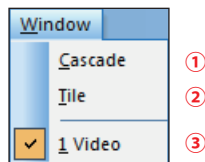
After setting, click [Save] on the File menu to save the image automatically.

The saved file name will be named [1] [Prefix] + [2] [Start Suffix].

e.g.) If [Prefix] is 『Image』 and [Start Suffix] is 『1』, File name will be 『Image1』

[Start Suffix] increases by 1 each time you save the image such as "Image 2" "Image 3" ...

## ■ Window Menu



### ① 【Cascade】

Multiple windows are displayed in cascade format .

### ② 【Tile】

Multiple windows are displayed in tile format .

### ③ 【Tab management】

All open tabs are displayed. The active window is checked.

## 4. Details of Tool Bar



### ① 【Open】

Same as **【Open ...】** in the File menu of the menu bar

### ② 【Save】

Same as **【Save】** in the File menu of the menu bar (See P.2 )

### ③ 【Save As】

Same as **【Save As...】** in the File menu of the menu bar (See P.2 )

### ④ 【Preview / Pause】

Switch pause and play live video.

### ⑤ 【Capture one frame】

Save images temporarily. Temporarily saved images are tabbed in the preview window.

It is convenience for saving images to be actually saved and for comparing with live images.

### ⑥ 【Interval capture frames】

Set the timer to automatically save the image.

You can set the start time, interval time, number of images saved.

When using this function, it is necessary to perform initial setting for saving images. (See P.3 )

### ⑦ 【Show video property】

Open the camera properties. In the properties of the camera you can adjust the brightness and color of the image. Property items and wordings depend on the camera.

For details of properties, please see the attached sheet.

### ⑧ 【Change video size】

Change the resolution of the camera. Click ▼ on the right side of the box to display the list of resolutions of the camera, so select the resolution to use.

### ⑨ 【About】

Display version information of Measure.

## 5. Details of Measure Bar ※The measure bar is active only when the image is stopped.



① ② ③ ④ ⑤ ⑥

### ① 【Draw line】

The mouse icon changes to and you can draw a line to measure the distance.

Drag from start point to end point to draw a line.

### ② 【Modify line】

The mouse icon changes to and you can modify lines you have drawn.

Click start point or end point and drag it to an arbitrary position to modify line.

### ③ 【Delete】

You can delete lines you have drawn.

Click start point or end point to delete line.

### ④ 【Delete all】

You can delete all lines you have already drawn.

### ⑤ 【Calibration with ruler】

You can perform calibration to determine the criteria necessary for measurement. (\* 2)

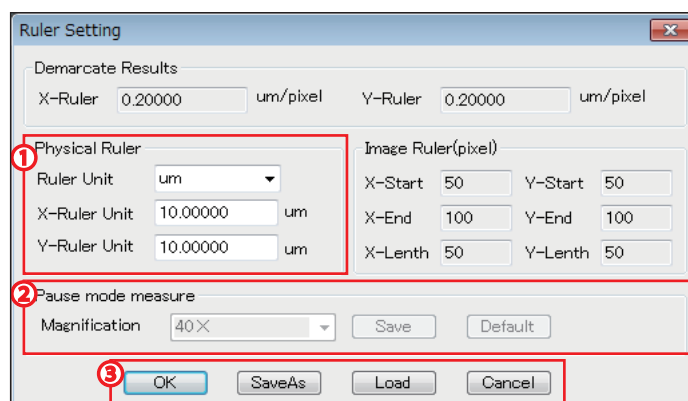
### ⑥ 【Set measurement color】

You can change the line of measurement, the color of text, the font size.

In the displayed window, change various settings.

## (\* 2) About Calibration

Calibration in the calibration window.



### ① [Physical Ruler]

Ruler Unit : Select the unit from  $\mu\text{m}$ , mm, cm, dm, inch.

X-Ruler Unit : Enter the X axis calibration value.

Y-Ruler Unit : Enter the Y axis calibration value.

### ② [Pause mode measure]

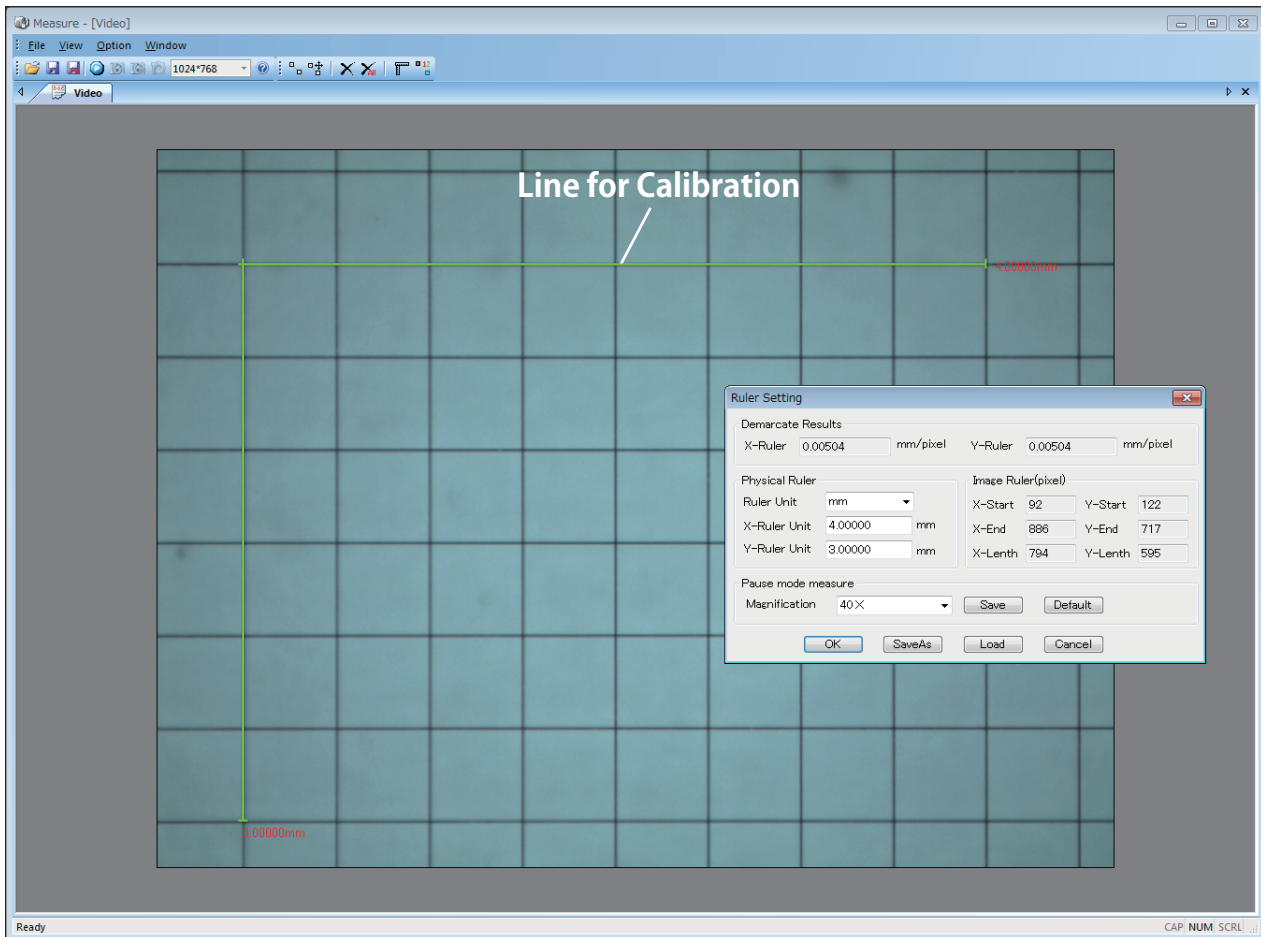
It is not used in the current version.

### ③ OK : Fix the calibration value. (The calibration value will not be saved.)

**SaveAs** : Save the calibration value in an arbitrary file name in an arbitrary place.

**Load** : Read out the saved calibration value.

## How to Calibrate



1. The scale is displayed at the magnification at which calibration is performed.
2. Click **【Calibration with ruler】** on the major bar to display the calibration window.  
As the calibration window is displayed, the calibration line is displayed on the screen.
3. Drag the calibration line and align the upper left intersection with the desired position on the scale.
4. Drag the X and Y edges of the calibration line to fit the arbitrary position on the scale.
5. In the calibration window, input the length of the calibration line at that time to X and Y.
6. Click the OK button to complete the calibration.

To save the calibration value and complete, click the SaveAs button.

It is necessary to perform calibration every time the magnification to be measured is changed. By saving the calibration value of the calibrated magnification once, you can read out and use the calibration value with the Load button when measuring with that magnification again.

Measure the distance between two points with the **【Draw line】** of the measure bar after completion of calibration.

※This software can not measure on real time video.